

Miniature Pulse Valves

A normally open 3-way valve that closes shortly after being pressurized and remains closed until supply pressure is exhausted and repressurized. Widely used in control circuits.



Medium: Air

Input Pressure: 40-150 psig/20 bar max.

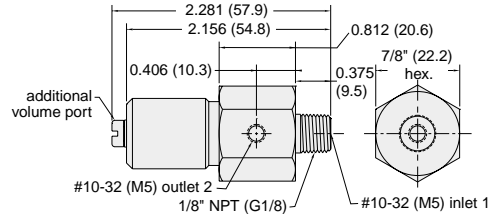
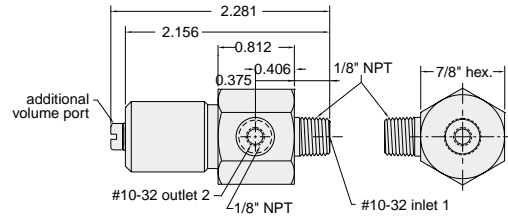
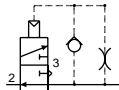
Mounting: 1/8" NPT (G1/8) thread; nut furnished

Volume Chamber: #10-32 (M5)

Operation: Converts a continuous supply of inlet air into a pulse of approximately 100 milliseconds

Response: 300 cycles per minute; time delay may be increased by adding standard Clippard volume chambers not to exceed 3 cu. in.

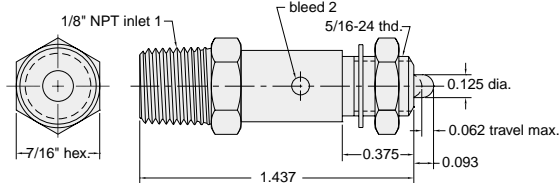
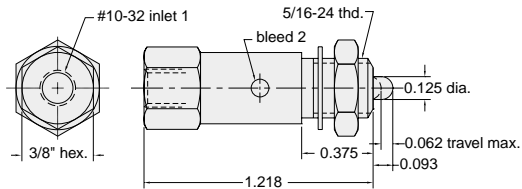
Construction: Body - brass, Seals - Buna-N rubber, Spring - stainless steel, Poppet - Delrin®



Part No.	Description
PV-1	Pulse Valve, #10-32
PV-1-M5	Pulse Valve, M5 Metric
PV-1P	Pulse Valve, 1/8" NPT

Normally Closed 2-Way Pilot Sensor

For use with pressure piloted control circuits, can repeatedly detect a position within 0.002" properly mounted. In jigs or fixtures it will signal correct position and start-ok to control circuit.



Medium: Air

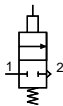
Stem Travel: 1/16" max. will open and close in as little as 0.0005"

Input Pressure: 300 psig max.

Air Flow: 3 SCFM @ 50 psig; 6 SCFM @ 100 psig

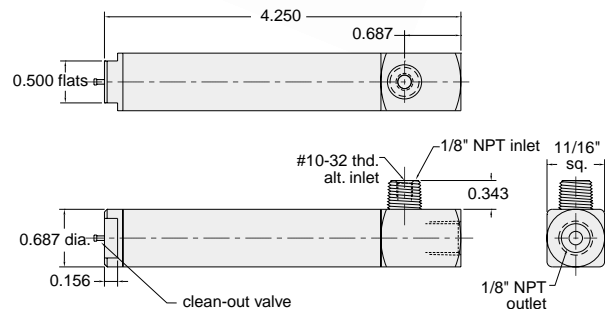
Force For Full Stem Travel: 7 oz. nominal

Mounting: #15/16-24 thread. Nut and lockwashers furnished



Part No.	Description
MPS-2	Poppet Valve with Pilot Sensor, #10-32
MPS-2-P	Poppet Valve with Pilot Sensor, 1/8" NPT

Replaceable Air Filter with Element



Medium: Air Only

Filtration: 35 micron

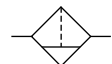
Input Pressure: 0-250 psig max.

Air Flow: 5.0 SCFM @ 50 psig; 9.0 SCFM @ 100 psig

Material: Brass

Mounting: Direct or inline

Cleanout: Press clean-out valve stem periodically to remove accumulated water. For complete cleaning, filter body unscrews at point "A" without disturbing piping. DO NOT DISASSEMBLE UNDER PRESSURE. Remove screw and filter element to clean or replace



Part No.	Description
MAF-1	Replaceable Air Filter with Element
12382	Low Pressure Drop, Concentric, Chemically-Inert 35-micron Filter Elements